

Point Road School



Parent/Student Handbook

2017 - 2018

Point Road School
357 Little Silver Point Road
Little Silver, NJ 07739
(732) 741-4022
www.littlesilverschools.org

This edition of the Point Road School Handbook will be a useful resource regarding the routines and procedures of our school. In addition, please also review the **Student Code of Conduct** document with your child. By becoming knowledgeable of the guidelines outlined in these documents, you will ensure a successful 2017-2018 school year!



Grades K - 4	8:05 AM - 2:55 PM
Preschool AM	8:55 AM - 11:25 AM
Preschool PM	12:25 PM - 2:55 PM

Arrival & Departure



Punctuality and attendance are important habits for a child to develop. Therefore, we recommend that, except in the case of illness, recognized religious holidays, and/or severe weather conditions you support your child's attendance at school.

Tardy

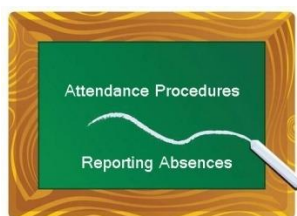


Little Silver policy states that after being late eight times, a letter will be sent home to the child's parents informing them that tardiness is becoming a chronic problem. It is difficult to have a consequence for students that are tardy when it is not totally their fault that they are late; however, loss of recess or after-school time may be assigned for chronic tardiness.

It is important that students be on time, prepared, and ready to work each day. A student, who is tardy to class, not only places his/her own learning in jeopardy, but also interrupts the learning of other students.

As you know, tardiness puts your child in the difficult position of rushing into school and needing to "catch up" rather than being afforded the opportunity to begin their day at a more normal pace. I encourage you to plan to leave your home a few minutes earlier in order to help your child arrive at school by 8:07 a.m.

Absences



All student absences **MUST** be reported.

The Little Silver Board of Education requires that the pupils enrolled in the schools of this district attend school regularly in accordance with the laws of the State. The educational program offered by this district is predicated upon the presence of the pupil and requires continuity of instruction and classroom participation. Students must be present a minimum of four (4) hours in order to receive credit for the day. Attendance and punctuality shall be required of all students enrolled in the schools during the days and hours that the school is in session. For their safety, children should not be permitted to arrive at school more than 15 minutes before opening school times. There is no supervision of children who arrive before 7:50 AM. In order for a student to attend extra-curricular activities or participate in sporting events, they must be in school on that date. A report card will record the number of times the pupil was absent and tardy for each month.

Board Policy 5200, Attendance, has defined "excused" and "unexcused" absences:

1. "Excused absence" is a student's absence from school for a full day or a portion of a day for the observance of a religious holiday (NJSA 18A:36,14-16) for Take Your Child to Work Day, or any other absence determined excused by the New Jersey Department of Education.
2. "Unexcused absence that counts toward truancy" is a student's absence from school for a full or portion of a day for any reason that is not excused as defined above or for any unexcused absence that does not count toward truancy listed below.
3. "Unexcused absence that does not count toward truancy" is a student's absence for a variety of reasons delineated in the policy including a student's illness.

Pupils may be denied participation in co-curricular activities or athletic competition if their attendance fails to meet the standard.

Please notify the school if your child will be absent by calling the attendance mailbox (732-741-4022; select option #2-report an absence) or sending an email to ssaul@littlesilverschools.org. You can also send a note or email PRIOR to the absence. Please be aware that unreported absences are considered unexcused counting toward truancy. For convenience, you may also use the "Contact the Nurse" option on this website and send an email message. Please include the child's name, grade and teacher, reason for absence, and expected duration. Doctor, dentist, and other necessary appointments should be made after school hours whenever possible.

A written statement of the cause of each absence is required immediately upon return to school. When a child is to be excused during school hours, please notify the office in writing, in advance, if possible. The child must be signed out by the parent in the school office. If a student is absent more than 3 consecutive days, a doctor's note is required.

Early Release of Students



- If it is necessary for a student to be dismissed prior to the end of the regular school day, the parent must send a note to the teacher. The student will be called to the office when the adult arrives at school.
- While most students are released only to parents/guardians, another adult will be allowed to take the student if **WRITTEN** permission is received from a parent. This person may be asked to present photo identification before your child is released to this designee.
- The parent (or authorized adult) must sign out the student in the office before leaving the building with him/her.
- Emergency requests should be presented in the front office. Students will not be released to others without **WRITTEN** authorization.

Since the early release of students does disrupt the classroom, we request that students remain in the classroom unless it is absolutely necessary.

Vacations



If it is expected that parents will make every effort to not schedule vacations during the school year to avoid interrupting their child's educational progress. Missing school because of a vacation is not a recognized legal absence and teachers are not required to prepare work for students. Students who do miss school will be allowed up to but not more than five days to make up work when they return. These students may want to check the school website for homework or contact a friend while they are away.

If a parent is going on vacation and leaving children at home, please complete the Parent Trip form that can be found on the nurse website. If you plan to be out of the country, please have this form notarized so that if your child should need emergency treatment, those that you have left in charge will be able to proceed as needed.

<http://schoolnurse-mrshall.weebly.com/forms.html>

Change of Address/Phone Number



Please inform the office immediately if you have a change of address or phone number in order to help in addressing mailings or in the case of an emergency.

General Information, Policies and Rules



Academic Honesty

Intellectual honesty is fundamental to the academic, emotional and ethical development of students. Cheating and plagiarism are examples of academic dishonesty and students who engage in these behaviors will be disciplined. It is important to understand that behaviors such as these jeopardize students' opportunities to become competent learners.

Grading Scale - 3rd and 4th Grades

Skills/Effort Key

4 - Exemplary(Performance exceeds grade level benchmark without prompting from the teacher)

3 - Accomplished(Performance meets grade level benchmark with some prompting from the teacher)

2 - Developing(Performance indicates progress towards grade level benchmark with prompting from the teacher)

1 - Area of Concern(Performance indicates insufficient progress towards grade level benchmark)

N/A - Not assessed this marking period

Marking Period Grading Key

A+	98 – 100	C+	80 – 82
A	95 – 97	C	77 – 79
A-	92 – 94	C-	74 – 76
B+	89 – 91	D+	71 – 73
B	86 – 88	D	68 – 70
B-	83 – 85	D-	65 – 67
		U	64 & below

Homework Guidelines



- Kindergarten 15 - 20 minutes weekly
- Grade One 15 minutes daily
- Second Grade 15 - 20 minutes daily
- Third Grade 20 - 30 minutes daily
- Fourth Grade 30 - 40 minutes daily

In addition, parents are encouraged to read nightly with younger students. Older students are encouraged to read independently. Homework should be done by the student without significant assistance from a parent. If you find your child having great difficulty with homework, please contact his/her teacher.

Crossing Guard Information



Crossing guards are located at the following locations: in front of Point Road School, at the corners of Seven Bridges Road & LS Point Road, at the intersection of Prospect and LS Point Road, LS Point Road and Parker and LS Point Road & Willow.

Bus Conduct



It is expected that all students will conduct themselves in an orderly and safe manner while riding a bus whether they are being transported to or from school or on a field trip. The following rules will ensure bus safety:

- Walk to the bus in an orderly fashion
- Quickly take your assigned seat and fasten your seatbelt.
- Face front and keep your legs and feet out of the aisles.
- Respect the rights and property of others.
- Remain seated at all times.
- Keep arms hands and other parts of the body inside the bus.
- Talk in a quiet voice.

Failure to adhere to these safety rules will result in disciplinary action, notification of parents and possible suspension of bus privileges.

Cell Phones



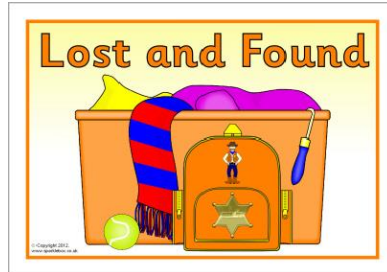
Students may bring cell phones to school for use after school hours, however, cell phones must be turned off during the day and left in lockers or backpacks. Students are not allowed to carry cell phones on them during the hours of school operation (8:05 AM-2:55 PM). Any student abusing these rules will have their cell phone confiscated. Parents will be called to pick up the cell phone. Subsequent infractions will result in disciplinary consequence. Under no circumstances are students permitted to use their cell phones to take photographs in school. We prefer for students to not have phones in school.

Dress



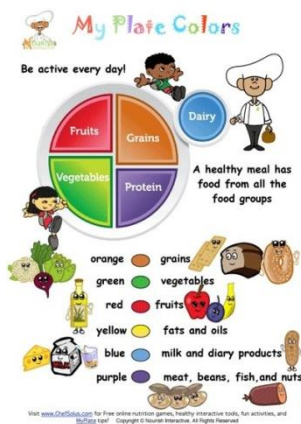
Students are expected to dress neatly and appropriately for school. Dress or appearance that distracts from the educational process is not permitted and students unsuitably dressed will be requested to return home to change into appropriate clothing. Clothing with inappropriate language or messages (implied or stated) and images are not acceptable. Shoes must be worn at all times. No backless footwear is permitted (including flip flops). Hats, caps or head coverings are not permitted inside the school. Sneakers are required for gym, sneakers with wheels or "heelies" are not permitted under any circumstances. Students should not bring or wear expensive items such as jewelry, CD players, iPods, etc. to school as the school will not be responsible for theft or loss.

Lost and Found



Students are encouraged to leave personal belongings that would be difficult or expensive to replace at home. However, if something gets lost, it is the student's responsibility to look for the items in the Lost and Found which is located in the foyer of Point Road School. Small items are in a basket in the main office. Long term Lost and Found items will be on display in the cafeteria; please check these areas, too. At the end of the school year, items that have not been claimed will be donated to a local charity.

Nutrition Policies USDA Federal and New Jersey



The USDA mandates that items that are: **1. of minimal nutritional value; 2. contain sugar as its first ingredient; or 3. being any form of candy**, may **not** be served in schools. Some foods considered of minimal nutritional value include:

- Soda
- Sugar Ices
- Chewing Gum
- Hard Candy/Cough Drops
- Jellies and Jelly Beans
- Spun Candy
- Lollipops
- Candy Corn
- Soft Mints
- Licorice
- Candy Coated Popcorn
- Marshmallow Candies

While students are encouraged to be aware of sound nutrition and making good food choices at all times, these regulations offer some latitude for special **celebrations** and **curricular related activities**. However, at **no time**, whether during lunch or on special occasions, may foods of minimal nutritional value, **such as those referenced above**, be served. However, in the spirit of encouraging students to make better choices, it is suggested that some of the following foods be considered for special events:

- **fresh fruit**
- **juice boxes**
- **pudding**
- **granola bars**
- **baked chips**
- **dried fruit**
- **pizza**
- **yogurt**
- **pretzels**
- **vegetables and dip**
- **trail mix**
- **popcorn (low fat)**

NJ Nutrition Policy

The federal "nutrition" guidelines do not ban cupcakes, cookies, snacks, etc. for celebrations; however, we will continue to pursue healthy alternatives in as many of our activities as possible!

Elementary Schools

- 100% of all beverages offered shall be:
 - Milk, Water, or 100% fruit or vegetable juices
 - Applies to all snack and beverage items sold on school property during the school day

All Schools

- No more than **8 grams** of **total fat** per serving, with the exception of nuts and seeds.
- No more than **2 grams** of **saturated fat** per serving.
- **All beverages shall not exceed 12 ounces**
Except: Water & Milk with 2% or less fat
Whole milk shall not exceed eight ounces
- The Schools will **NOT** provide foods of minimal nutritional value (FMNV) as defined by U.S.D.A. For example: Soda, chewing gum, fondants, licorice
- All food and beverage items listing **sugar**, in any form, as the **first ingredient**.
- All forms of **candy**

Lunch Info



Here's what you need to know about buying lunch and milk:

- Lunch with milk (cold sandwich or bagel lunch) - \$4.50
- Deli Sandwich \$3.50
- Bagel - \$1.00 (with butter \$ 1.50, cream cheese \$2.00)
- Fruit & Yogurt Parfait \$2.50
- If a student does not have lunch and no money in their account, they will be given a bagel with butter or cream cheese from the cafeteria. This amount will be added to their account. More information can be found on the website: <http://http://www.littlesilverschools.org/lunch-menu.html>

Allergies



The Board of Education recognizes that pupils may have allergies to certain foods that may be life-threatening, and has developed a policy (5331 - Management of Life Threatening Allergies in Schools) to provide guidance to school personnel and parents. Because of the increasing number of students in our schools with severe allergies to certain foods, we have to continuously examine our procedures for providing food in school. In some cases it has been necessary to curtail the serving of snacks and foods for celebrations. In other cases, we have been able to work with parents to provide snacks that are safe for ALL of the children in the classroom. Your child's teacher will notify you if there are severe allergies in their classroom. If you have any questions, please contact Mrs. Saul, the School Nurse.

Snack List 2017-2018

(This is a peanut and tree nut free list - it is NOT Dairy, Gluten or Wheat free)



All fruit sauces (applesauce, strawberry sauce, etc.)
Animal Crackers-365 Organic Classic Vanilla (Whole Foods); Kinni-Kritters (Gluten free)
Any beans (chickpeas, pinto, black, kidney, etc.)
Belvita Breakfast Biscuits- Blueberry, cinnamon brown sugar bites, and strawberry sandwich
Cereal - Corn & Rice Chex, Frosted Mini Wheats, Plain & Multi grain Cheerios (Cheerios brand ONLY), Kix, (NO Chex Mix)
Cereal Bars,Soft Baked-Kashi Strawberry,Blackberry, Cherry Vanilla; Enjoy Life Chewy Bars; Nutrigrain
Corn cakes (plain ONLY)
Corn puffs and/or rice puffs
Crackers, Classic Round (wheat flour, safflower oil, and sea salt) (Back to Nature)
Fritos
Fruit roll ups (includes Trader Joe's Organic Fruit Strip)
Fruit snacks (Annie's brand/Mott's brand)
Graham crackers (any flavor)
Goldfish snack crackers
Granola (Enjoy Life ONLY)
Granola bars - Enjoy Life Health Bars, Vermont Nut Free brand
Olives
Plain dried fruit (raisins, craisins, mangos, apricots, prunes, etc.)
Plantain chips
Popcorn plain; Smartfood white cheddar
Potato Chips, plain (Lays, Pringles or Deep River)
Pretzels (plain ONLY) (Bachman or Gold Fish brand(which contains dairy); Herr's brand (plain ONLY)
(includes Glutino Gluten free Pretzel Twists); Snyder's (plain only; gluten free)
Pumpkin seeds (Super Seedz brand only)
Rice crackers (Kame brand rice crackers plain or salted ONLY)
Rice cakes All Lundberg rice cakes
Saltines
School Safe Chocolate chip cookie bars
Sun Chips (original flavor ONLY)
Grahams cookies (any flavor) (Teddy & Annie's brand only)
Terra (real vegetable chips) Sweets and Beets (no salt added)
Ting Corn Sticks (Pirate Brand)
Tortilla Strips Original (Green Mountain Gringo)
Tostitos (plain ONLY)
Veggie and Pirate Booty

Birthdays



Instead of bringing treats for birthdays, you are encouraged to donate a book or game for the classroom or to Mrs. Chamberlain's library. We will put a special sticker in the book or on the game saying you donated it.

Unless your child is inviting every child in his/her class to their birthday party, he/she will not be allowed to distribute invitations in school. Other students experience hurt feelings when not receiving an invitation.

Emergency Drills



We will be having emergency drills during the school year. These drills are designed to assure your safety should an emergency arise. We will be having fire drills, weather drills, lock down drills and evacuation drills. Students will practice these with the teacher before we do an actual drill.

Visitors and Volunteers



As a safety precaution, in order to enter the building, all visitors must be "buzzed in" by the office staff.

If a parent brings in homework, books, lunch, snacks, etc. to school, they will be dropped off at the Main Office. Our staff will arrange to get these materials to the child at an appropriate time.

All visitors are required to check in at the Main Office to receive a "Visitor's Badge" before entering any area of the school.

All Volunteers are required to read the Volunteer Handbook and sign off on the acknowledgement page as well as the Confidentiality Agreement.

Behavioral Intervention and Supports



For the 2017-2018 school year, the staff of Point Road School will continue to implement positive Behavioral Intervention and Supports and use the principles of the approach in developing our school-wide plan.

The guiding principles of Behavioral Intervention and Supports which Point Road has adopted are:

- The social curriculum is as important as the academic curriculum
- How children learn is as important as what they learn: Process and content go hand-in hand
- The greatest cognitive growth occurs through social interaction
- To be successful academically and socially, children need to learn and practice specific social skills. Five particularly important skills:
 - Cooperation
 - Assertion
 - Responsibility
 - Empathy
 - Self-Control
- Knowing the children we teach—individually, culturally, and developmentally—is as important as knowing the content we teach
- How we, the adults at school, work together is as important as our individual competence: Lasting change begins with the adult community (2007, Northeast Foundation for Children, Inc.)

In order to align our plan with these principles, staff have been involved in professional development and are using the Responsive Classroom language and techniques in their practice. Some important components that are being incorporated throughout the school include:

- **Morning Meeting** - gathering as a whole class each morning to greet one another, share news, and warm up for the day ahead
- **Rule Creation** - helping students create classroom rules to ensure an environment that allows all class members to meet their learning goals
- **Interactive Modeling** - teaching children to notice and internalize expected behaviors through a unique modeling technique
- **Positive Teacher Language** - using words and tone as a tool to promote children's active learning, sense of community, and self-discipline
- **Logical Consequences** - responding to misbehavior in a way that allows children to fix and learn from their mistakes while preserving their dignity
- **Guided Discovery** - introducing classroom materials using a format that encourages independence, creativity, and responsibility
- **Academic Choice** - increasing student learning by allowing students teacher-structured choices in their work
- **Classroom Organization** - setting up the physical room in ways that encourage students' independence, cooperation, and productivity
- **Working with Families** - creating avenues for hearing parents' insights and helping them understand the school's teaching approaches
- **Collaborative Problem Solving** - using conferencing, role playing, and other strategies to resolve problems with students

Supporting the Social, Emotional and Behavioral Needs of PRS Students



For the **2017-2018** school year, support for the social, emotional and behavioral needs of our students will be based on the best elements of several research-based approaches and tailor them to our community and our student needs. Our staff has been trained in the principles of Responsive Classroom, PBIS (Positive Behavior Intervention Supports), Zones of Regulation, Social Thinking Curriculum, Growth Mindset, and Applied Behavioral Analysis and will use the principles of these to address student behaviors.

One of the foremost advances in school wide discipline is the emphasis on school wide systems of support that include proactive strategies for defining, teaching, and supporting appropriate student behaviors to create positive school environments. A continuum of positive behavior support for all students within a school is implemented in areas including the classroom and non-classroom settings (such as hallways, buses, and restrooms). Positive behavior support is an application of a behaviorally-based systems approach to enhance the capacity of schools, families, and communities to design effective environments that improve the link between research-validated practices and the environments in which teaching and learning occurs.

Using a Tiered Model of Behavioral Supports: Tier 1: Primary Level (Support for all)

The first level is the universal level. This refers to the school-wide expectations that are defined and taught to all school staff in each of the settings within the school. These expectations are developed by the team and taught to students by their regular classroom teachers, administrators or others who have contact with all students. The fidelity of the expectations should be determined by the continuous collecting of data. Along with the expectations, there should be a system of acknowledgement and reinforcement of expected behaviors.

The Core Principles of Behavioral Interventions and Supports are:

1. schools can effectively teach appropriate behavior to all students
2. intervene early
3. use a multi-tier model
4. use research-based interventions
5. monitor student progress often
6. use data to make decisions
7. use assessments to screen, diagnose, and monitor progress

These principles make our program significant in that it makes a more proactive rather than reactive approach. We have developed a common language, common practices, and consistent application of positive and negative reinforcement at a school-wide level.

Tier 2: Secondary Level (Support for some)

Although the primary level is taught and reinforced with all students, there may be some students who need additional intervention for students with at-risk behaviors as determined by the data. Secondary prevention provides intensive or targeted interventions to support students not responding to the primary efforts.

Tier 3: Tertiary Level (Support for few)

Behavioral Interventions and Supports acknowledges that some students have high risk behaviors and need specialized, or individualized skill building practice due to exhibited habits of problem behavior. The goal at this level is to diminish problematic behavior, increase adaptive skills, and attempt to increase the student's quality of life.

Point Road School Responsibility Report

Student Name: _____ **Date:** _____ **Reporting Staff Member:** _____

Location: Classroom/Special Subject Hallway Bathroom Playground Cafeteria Bus After School

Expectations for our students: Respectful, Responsible, Ready to Learn

(Please check the expectation(s) the student had difficulty with)

Expectations with Peers	<ul style="list-style-type: none"> • Work cooperatively with others • Keep hands and feet to yourself • Be kind to the other students • Play fairly, share and help others (those who fall down, are less skilled, or make mistakes) • Include everyone • Show respect for others and their personal space • Maintain a calm voice when problem solving
Classroom/ Special Subject Expectations	<ul style="list-style-type: none"> • Participates in discussions/activities with relevant information • Speaks at appropriate times • Is focused and listens attentively • Displays organizational skills • Follows directions • Makes good use of free time • Works independently • Completes classroom assignments on time • Completes homework assignments on time • Accepts consequences for actions
Hallway Expectations	<ul style="list-style-type: none"> • Walk to your class area and be seated (morning, lunch/recess) • Read a book, talk quietly with a friend, stay seated (morning) • Show respect during Pledge of Allegiance (stand quietly, remove hats, etc.) • Only enter a classroom when a teacher is present • Walk slowly, safely, and be aware of your surroundings
Bathroom Expectations	<ul style="list-style-type: none"> • Use bathroom for bathroom purposes only • Use the sink for washing your hands only • Push button one time for soap • Pull only once for paper towels • Place garbage in trash cans, if the towel drops to the floor, pick it up • Spend just the time you need • Greet other students quietly and maintain short conversations, if any
Playground Expectations	<ul style="list-style-type: none"> • Follow instructions given by ALL supervising adults • Follow the rules of the game • Play safely • Use equipment properly • Return items to the barrel • Line up when the whistle is blown • Report problems and accidents to the teacher in charge
Cafeteria Expectations	<ul style="list-style-type: none"> • Speak in soft voices • Remain seated • If you need help, raise your hand • Treat the people working in the cafeteria respectfully, use your manners • Clean up after your lunch making sure your table and floor area is clean

Description of Incident & Consequence(s):

Student Reflection

(This may be completed independently by the student or in cooperation with an adult.)

What did I do? (Unexpected behavior)

Why did I act or respond this way?

How did my actions affect others?

How did the other people who were affected feel about my actions?

What can I do now?

What can I do in the future to keep this from happening again?

Staff Member Signature: _____

Date: _____

Student Signature: _____

Date: _____

Parent Signature: _____

Date: _____

Principal Signature: _____

Date: _____

All responsibility reports are scanned by reporting staff member for electronic storage and emailed to the School Counselor and Building Principal

Point Road School Bus/After School Expectations Report

Student Name: _____ Date: _____ Reporting Staff Member: _____

Location: Bus After School

Expectations for our students: Respectful, Responsible, Ready to Learn

(Please check the expectation(s) the student had difficulty with)

Bus Expectation	<ul style="list-style-type: none">• Immediately go to the bus line (no wandering)• Stay seated and against walls in the hallway while waiting for the bus• Obey the bus driver, aide and safety patrol at all times• Fasten your seatbelt as soon as your get on the bus• Stay seated on the bus, with the seat belt fastened at all times• Talk in a quiet voice• Tell the bus driver if someone on the bus is not following the rules• Report this to the teacher in charge of the bus.
After-School Expectations	<ul style="list-style-type: none">• Always know what the plan is for after school; who is picking you up, what room are you going to, etc.• If I do not see my parent/babysitter at our after school meeting place, I will return to the school office• Report to the activity or club immediately after school• Ask the person in charge if you need something, like having to go to the bathroom

Description of Incident & Consequence(s):



Student Reflection

(This may be completed independently by the student or in cooperation with an adult.)

What did I do? (Unexpected behavior)

Why did I act or respond this way?

How did my actions affect others?

How did the other people who were affected feel about my actions?

What can I do now?

What can I do in the future to keep this from happening again?

Staff Member Signature: _____

Date: _____

Student Signature: _____

Date: _____

Parent Signature: _____

Date: _____

Principal Signature: _____

Date: _____

****All responsibility reports are scanned by reporting staff member for electronic storage and emailed to the School Counselor and Building Principal****

Acceptable and Unacceptable Behavior Expected and Unexpected

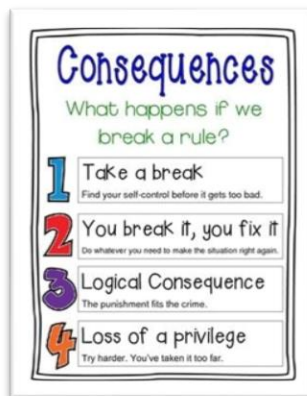


Acceptable/Expected behavior is that behavior which contributes to a positive school community.

Unacceptable/Unexpected behavior negatively impacts the safety and/or learning of self or others.

Consequences for Unacceptable/Unexpected Behavior

- We believe that behavior is complex, and our approach is personalized. Our commitment to collaboration extends to behavior support and parents will be contacted, when necessary, to be involved in solution driven problem solving.
- Our first response with a child is always to teach and support. We do this proactively and responsively. There are times; however, where more direct consequences are appropriate. In an elementary school context, consequences are 'logical' and happen as a result of the behavior or the time necessary to resolve the situation.



Take a Break - basically a time out to regain self-control!

You Break It - You Fix It

Children take some responsibility for fixing as best they can, any problem or mess they have created.

Some examples:

- One child accidentally knocks into another on the playground. She stops, apologizes and offers to help the other child get up.
- A student knocks over a tray of food carried by another student. He helps clean it up and perhaps offers to go back and get new food.
- A child hurts the feelings of another. She participates in "an apology of action" by writing a note, including the hurt child in a friendly activity.
- A student is part of a conflict. The students involved participate in a conflict resolution process.
- A student wastes class time talking to a friend, looking out the window, trying to avoid the task. He makes up the time at another point during the day.

Playground Rules



1. Must drop straight down on dismount from rings and bend knees when you hit the ground
2. NO touching or picking up ground cover
3. NO running on the structure
4. You must be able to reach the rings on your own before using them
5. Tire swings and swings
 - Form two single file lines next to poles in corner near gym wall
 - Once a student is done with swings next student in the line replaces that student
 - 5 minute time limit to be monitored by Aide stationed at the swings and tire swing
 - NO jumping off of swings, come to a complete stop and walk off.
 - Two students per tire with feet inside of tire hole, one student can be pushing tire
6. Challenge Center (Fireman's Pole)- Climbers can go up or down.
7. Climbing Wall- one student at a time
8. Clover Climber- 2 students on at a time
9. Crazy Eight Climber- 2 students at a time
10. Chain Ladder- 2 students at a time (up and down)
11. All Slides
12. Feet first going down
13. Student must be off the slide before next student goes
14. NO CLIMBING UP THE SLIDES ONLY SLIDING DOWN
15. Platform Deck- NO RUNNING ON UPPER PLATFORM!!!
16. Climbing Wall can only be used to climb up to platform deck (NO EXCEPTIONS!! UP ONLY!!)
17. NO SKATEBOARDING at ANY time!
18. NO DOGS

Courtyard Rules



1. Access to the courtyard must be with a teacher or other trusted adult. NO ONE should be in the courtyard alone.
2. NO running on the paths or on the amphitheater seats.
3. Walk on the paths, stone walkways only. DO NOT walk or run through the gardens.
4. NO picking up or throwing stones.
5. NO dropping stones in the ponds.
6. NO hands or feet in the pond areas.
7. NO playing with the hoses or sprinklers.
8. Chess pieces are for playing chess. They are not to be picked up, swung around or sat upon!
9. All trash must be put in the trash containers or taken back to your classroom to be thrown away.



Harassment, Intimidation and Bullying

New Jersey's Anti-bullying Bill of Rights Act was signed into law on January 5, 2011. The provisions of this law took effect on September 1, 2011. For more information please refer to the **Policy** section on the district website: www.littleschools.org and/or Miss Ford's website: <http://missfordpointroad.weebly.com/hib-information-and-resources.html>



Point Road School Activities and Events

Club Descriptions (On School website under Students tab, Activities & Jobs):

- Band & Orchestra Lessons
- Chorus
- Evergreens
- Frequent Walker or Biker Club
- Get to the Point Newspaper Club
- Homework Club
- Principal's Walking Club
- Girls on the Run

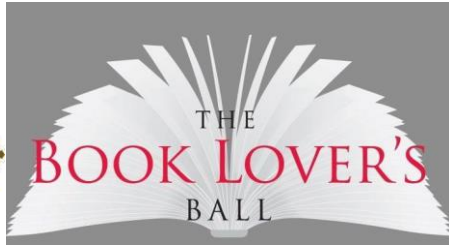


Arbor Day- The Kindergarten students celebrate Arbor Day/Earth Day on the last Friday of April. Family members are invited to school to see their program.



Festival of the Arts

Point Road teachers along with the PTO and volunteers work together to transform the school into an art gallery, a STEM Lab and concert hall. This event will be held on June 7th during which time you will be able to view your children's art work from the entire year, test out our roller coasters, visit the Rock and Roll Hall of Fame and end the evening with a concert featuring the chorus, band and orchestra. Typically one piece of art per student is framed and available to purchase as a fundraiser for the PTO. All displayed art is returned to students before the last day of school.



Bookfairs

Point Road Students are invited to participate in two Book Fairs. The first one will be held after school on December 15th at Barnes and Noble in Eatontown. The Spring Bookfair is held at PRS beginning with our Book Lover's Ball (students come dressed as their favorite book character and dance the night away) on Friday evening, February 23rd and will continue during the day until March 2nd.



Community Outreach Little Silver

Typically two to three events are planned each year by the PTO Community Outreach Committee. These activities to benefit those in need, and in-school projects to teach our children why helping others is so important. Volunteers (children and parents) help with the collection and distribution of items to local charities. The Bag Brigade is typically held in the fall and the Pajama Drive in the winter. Dates for this year are November 17th and February 9th!



Every child is unique and special...

Different Learners Day

Organized by the FODL (Friends of Different Learners Committee,) Celebrating Different Learners Day is for 3rd graders and is designed to educate children about those who have different learning styles and various disabilities. Typically Different Learners Day takes place in the fall. This year this event will take place on November 3rd.



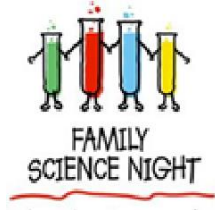
EFLS Fund Raising Event - This year's event date is March 2nd! The purpose of the Education Foundation of Little Silver (a 501(c)3 organization) is to enrich and support technology and other educational programs for students in the Little Silver School district. For nearly 22 years, the Education Foundation of Little Silver (EFLS) has worked to place technology directly into the hands of students at Point Road, Markham Place schools and the Little Silver community. Please join us at our once a year fundraiser to help us raise funds and dance the night away with friends, neighbors and community members.



Extra-Curricular Picnic - 3rd and 4th grade students that participate in Chorus, Band, Orchestra or have a school job such as Safety Patrol, Point Road Garden Warriors etc. are treated to a BBQ lunch and an afternoon of fun and games. This usually takes place on the Friday before the last day of school.

TEACHERS VERSUS STUDENTS

Faculty vs. 4th Grade Games - The staff and 4th grade students participate in a series of after school games throughout the year. Beginning with Kickball in October, Basketball in January and Volleyball in March!



Family Curricular Evenings - Each year the Board of Education, in conjunction with the LSEA, PTO and EFLS will sponsor a curricular event. We have had Technology Showcases, Literacy Evening and Math Nights. Stay tuned to see what exciting evening we will be presenting during this school year!



Family Fitness Night

Point Road School is proud to announce the Eleventh Annual Family Fitness Night which will be held on January 25th, 2018 from 6:30 PM-8:30 PM. Your family is invited to join us for an evening of healthy fun for everyone. You will visit different stations to be "put to the test" with activities your students experience in physical education classes, as well as participating in some newer activity trends in lifetime health and fitness. Registration is limited and it is first come first served event.



Father Daughter Dance

This special occasion is normally held at the end of January. Students in grades 1-5 are extended invitations on a first come first served basis.



Field Day

We will have the annual Point Road Field Day on Friday, May 18th. Students have a PTO Cultural Arts Program first thing in the morning and the games begin at 10:15 AM! We will break for lunch and recess between and then resume the Field Day events at 1:10 PM and continue until the end of the school day.



Fourth Grade Brunch and Moving Up Ceremony is held on the last day of school. The PTO provides a buffet brunch and music in the courtyard. Parents are invited to join us for the official moving up ceremony in the gym which features a slideshow and diplomas. The culminating event is a "Clap Out "Ceremony done by the entire school and parents.



Frequent Walker or Biker Club

Students who walk or ride to school can participate in this activity. They get a ticket which is hole punched every time they walk or ride and they are given a small prize after ten punches on the cards.



Halloween Parade at Point Road School is held on Halloween or the day closest to Halloween on the years where Halloween falls on a Saturday or Sunday. Students are encouraged to bring their costumes to school. They have time after lunch to change into them and get ready for our school parade which is held at 2:00 PM, weather permitting it is held outside.



Little Silver 5K is the annual PTO fundraiser typically held the first Sunday of October. It is a USAT Certified Race that starts and finishes at Red Bank Regional High School and is a fun day for all ages. Volunteers are needed on race day for the race and after party as well as planning in the summer months leading up to the race.



Media Center Pumpkin Decorating Contest

Students may submit a pumpkin decorated in the spirit of their favorite book as part of a contest and all entries are displayed during the PR Halloween Parade.



Mix It Up Day

Mix It Up at Lunch Day is usually held on the last Tuesday of each October. Since this happens to be Halloween, PR will be celebrating this on Friday, October 20th! **Students are randomly assigned to different tables during lunch so that they have an opportunity to interact with other students.**



Moving Up Day -Is held in May for our fourth grade students. The 4th Grade students walk to Markham Place where they hear all about life as a middle school student. They then take a tour of the building and have time for questions and answers. In the evening, the parents are invited by the MP Principal for an evening where their questions are answered.



Multicultural Day

The PTO hosts this for 2nd grade students geared at creating awareness and appreciation for other cultures and customs. Parent volunteers prepare displays and discussion points on geography, culture, customs and a typical day for a child in a specific country. Students explore the country displays in small groups, participate in a craft or activity and have their passport stamped along the way.



Plant Sale

Each year, just before Mother's Day, the children of PRS can shop during school for plants that are displayed in the Courtyard and/or inside the hallways. The sale continues into the after-school hours as well. The PTO oversees the purchase and setup of the plants with the help of volunteers.

POINT ROAD CAFE

After Dark

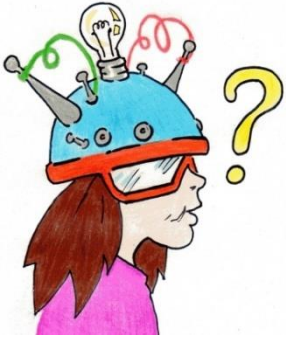
Point Road Café After Dark - this is our annual talent show featuring a multitude of talents performed by our 3rd and 4th grade students.



Power On Week - An EFLS event celebrated the first week in October and the kickoff is usually held on the same day as Walk/Ride to School. The EFLS encourages the community to embrace the use of technology and to support their fundraising efforts.



Power Off Week - An EFLS event it celebrated the first week in May and families are encouraged to "turn off technology" and participate in fun, family activities, some of which are sponsored by the EFLS.



SciVention Convention

The STEM program hosts this Science Fair type event February 1st and is open to grades K-4. The purpose is to encourage students' interest in science and invention, to develop their inquiry and investigation skills, and to enhance children's pride in completing and presenting a research project. Children present their projects first to students during the school day and then the SciVention Convention is open to parents at night.



Spelling Bee

Each year the 3rd and 4th grade students participate in a series of Spelling Bees, the culmination of which is our Annual Spelling Bee which is held early in January. The 4th grade winner of this Spelling Bee advances to the next level which is held at Monmouth University.



Teacher Appreciation

We celebrate our teachers and staff throughout the year and during Teacher Appreciation Week in May. At the start of the school year, the PTO awards Teacher Grants. Around the holiday season, the PTO hosts a Cookie Exchange where parent donated sweets are organized by volunteers and taken home by the teachers. The PTO hosts two lunches each year with the help of parent volunteers.



Walking School Bus

Little Silver parents: in case you haven't yet heard about our Walking School Bus program that is starting in September for Point Road and Markham Place schools, below is the Signup Genius link to sign your kids up. Let's get our kids walking and biking to school rather than clogging up the streets with more traffic. Studies show that walking and biking to / from school gives kids more energy and helps them stay better focused throughout the day.

Any questions about the Walking School Bus, please contact the coordinators:

Christen McMahon littleilver3@hotmail.com

Carolyn Smolinsky carkeel25@verizon.net

Abi Healy ab_healy@yahoo.com

<http://www.signupgenius.com/go/30e0a48aaab2aa4ff2-lswalking>



Walk or Bike to School Day - This national event is held the first Wednesday in October, this year the date will be October 4th. This event is coordinated by the Little Silver Police Department and the PTO Safety Committee. Students are taught bicycle safety and encouraged to walk or bike to school on this day.



Winter Ice Skating Event

The PTO hosts this fun family event at the Red Bank Armory typically in early January.